

AirLoc Application News...

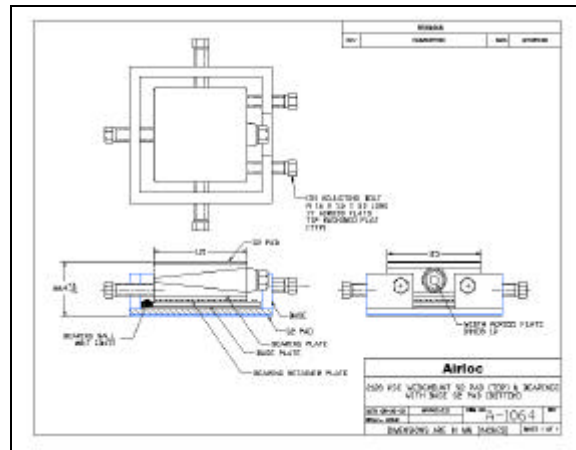
AirLoc positioning Wedgmount® provides precise 3-axis positioning

One of the major US auto manufacturers required a precise, 3-axis, positioning mount for their engine block transfer lines. “Wing” machines on the line required precise locating from machine to machine for component assembly. AirLoc already had a very precise vertical leveling Wedgmount design with their model 2120-KSC and needed to find a way to provide precise two axis horizontal positioning as well. The mount shown below was designed for this specific purpose and has proven effective with precise adjustment being possible in all three axis.

The 2120-KSC Wedgmount, with vertical adjusting bolt, floats on a grid of ball bearings and can be easily positioned by adjusting the bolts on four sides of the bottom housing. This engineered solution is an example of AirLoc’s capability to provide special designs to solve unique machine leveling problems.



Positioning Mount



AirLoc Layout of Positioning Mount

For more information regarding AirLoc Wedgmounts® or other leveling & isolation products, contact our headquarters in Franklin, MA or your regional AirLoc Representative