

# Technical datasheet

## Wedgmounts EcoFixx 504-VRC /NK

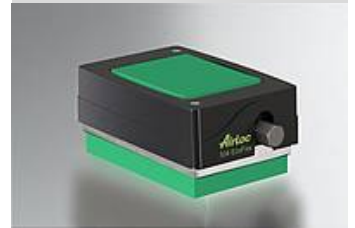
Art. no.  
**1.30504.65**

For transport lines, special machines and tool machines. High load capacity, excellent constant leveling stability and overall stability.

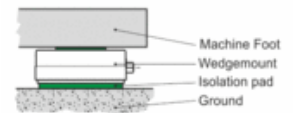
Max. load  
**4000 daN**

Article information	
Type	504-VRC /NK
Name	Wedgmounts EcoFixx
Art. no.	1.30504.65
Color	RAL 9005 jet black

### Type illustration



### System description



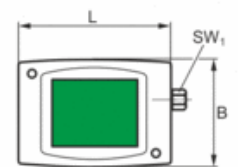
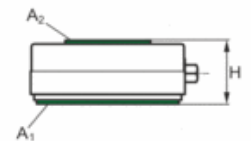
Technical Data	
Max. load [daN]	4000
Leveling range [mm]	3.5
Leveling range [mm]	-3.5
Leveling distance per turn [mm]	0.37
Temperature range from [°C]	-20
Temperature range to [°C]	80
Weight [kg]	2.688

Dimensions	
Height H [mm]	63
Length L [mm]	136
Width B [mm]	97
Width across flats SW <sub>1</sub> [mm]	14

### Pad equipment

Bottom pad type	915
Pad thickness unloaded [mm]	15
Coefficient of friction on concrete with fine mortar	0.8
Coefficient of friction tolerance +/-	0.1
Hardness [° Shore A]	90 - 95
Bottom pad area A <sub>1</sub> [cm <sup>2</sup> ]	96
Top pad type	903
Pad thickness unloaded [mm]	3
Coefficient of friction on concrete with fine mortar	0.8
Hardness [° Shore A]	90 - 95
Top pad area A <sub>2</sub> [cm <sup>2</sup> ]	52

### Dimensioned sketch



### Mounting sketch

