

up to 9000 lbs per mount

## Economical Wedgmount® for precise leveling, ideal stability and non-skid properties

Cost effective, high quality and easy machine installations are demanded by equipment manufacturers. AirLoc has responded to these challenges and developed a new type of Wedgmount® called **EcoFixx**.

**EcoFixx** has been specifically designed for machines requiring high precision, fast, safe and most importantly, economic installation.

**EcoFixx** reflects 60 years of experience in research, development and production of precision machinery mounts and delivers speed, safety and (last but not least) high profitability.

Developed with the latest 3D CAD modeling tools, tested with precision measuring equipment in our test lab and produced in-house with state-of-the-art machines, combined to provide a high quality, economical solution.

- ▶ **Easy, safe and economical machine installation**
- ▶ **Contamination protected leveling system for long lasting, consistent performance**
- ▶ **Freestanding or Bolt-on designs for machine requirements**
- ▶ **Built-in mis-alignment compensation up to 2° with height adjustment rings optional for uneven floors**
- ▶ **Compact and rugged design with maximum flexibility to fit and last under all types of machines**

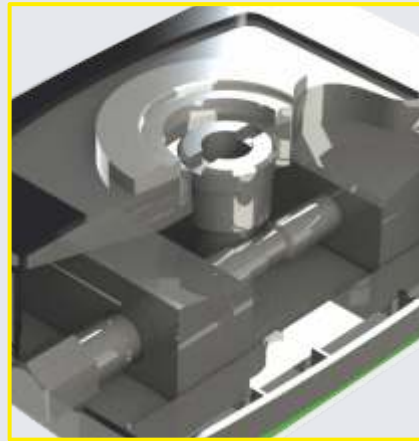
## The economical EcoFixx Wedgmount® Precision Levelers are characterized by the following features and benefits:

- Maximum design freedom – Compact size to fit in limited space
- Freestanding and Bolt-on versions
- Protected against contamination of moving parts
- Fast precise leveling for easy installation
- Low leveling torque for easy adjustment
- Rugged spherical seat for bolt-on version on uneven floors
- Provides excellent vibration isolation utilizing proven AirLoc pads

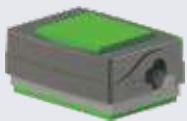
Ask for the AirLoc catalogue free of charge!

Color  
Jet Black RAL 9005

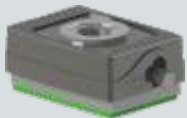
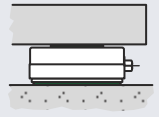
EcoFixx offers a compact, contamination protected adjustment system, which enables fast and precise machine leveling.



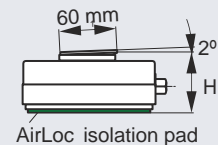
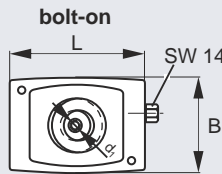
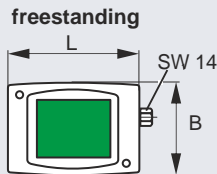
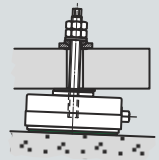
### Technical Data



	Article-No.	Load lbs	H mm	L mm	B mm	d <sub>1</sub> mm	Leveling mm	Torque ft-lbs
<b>freestanding</b>								
<b>504-VRC/NG</b>	1.30504.62	4000	63					4
<b>504-VRC/NE</b>	1.30504.60	9000	51	136	97		+/- 3.5	12
<b>504-VRC/NK</b>	1.30504.65	9000	63					12



	Article-No.	Load lbs	H mm	L mm	B mm	d <sub>1</sub> mm	Leveling mm	Torque ft-lbs
<b>bolt-on</b>								
<b>504.1-VRKC/716</b>	1.36504.56	4000	64			M12		4
<b>504.1-VRKC/902</b>	1.36504.59	9000	51	136	97	+	+/- 3.5	12
<b>504.1-VRKC/915</b>	1.36504.65	9000	64			M16		12



#### AirLoc LLC

5 Fisher Street, Franklin, MA 02038 USA  
Telephone +1 508 528 0022, +1 800 922 3019 Fax +1 508 528 7555  
www.airloc.com, info@airloc.com

#### Worldwide Distributors

Please visit us in the Internet at [www.airloc.com](http://www.airloc.com) for details about our worldwide distributors.

All information and specifications are true and correct to the best of our knowledge; they do not represent an assurance of properties and do not release users from examination on their own, also with reference to the trademark rights of third parties. Technical revisions are subject to change without prior notice.

