

Case Study

Machine installation of a fineblanking press



Starting situation

For heavy demands on a machine installation, a lot of expertise and experience is mandatory to be able to detect problems at an early stage and quickly find and implement the best solutions. Joint planning of the machine installation ensures a trouble-free set up and prevents expensive reworking of the machine and building, during operation time.

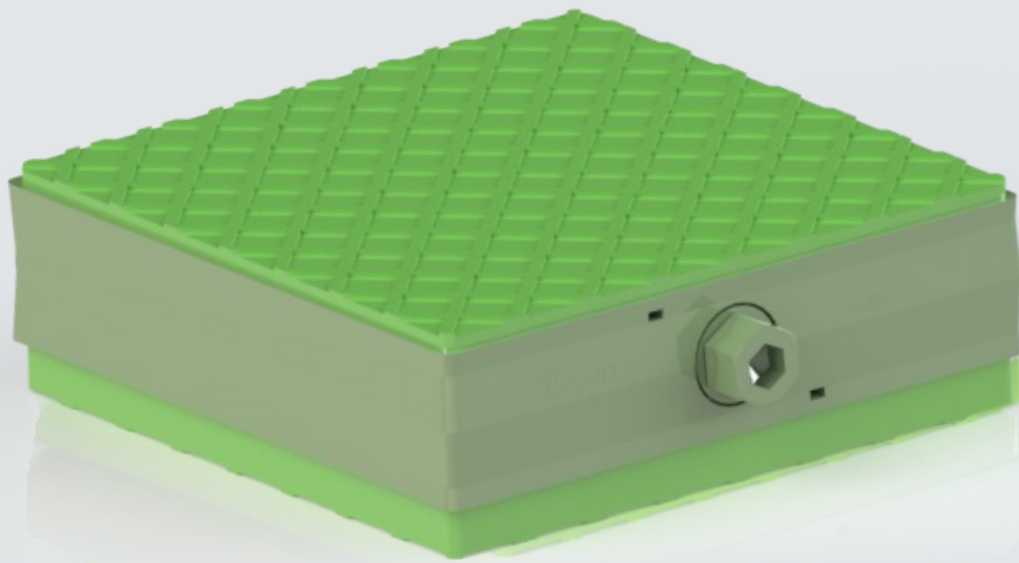
The challenge

Highly complex, pre-finished, multi-functional parts can be economically produced from plates using servo-mechanical fineblanking presses. Due to the design of these presses with a large eccentric mass driven by a 4000 Nm servo motor, large horizontal forces together with the vertically acting tool force are generated. This combination of horizontally and vertically acting forces with a relatively low press weight places the highest demands on machine installation.



The solution – 4-VRC/NA

In close cooperation with the customer, requests and requirements with regard to the effect of impact insulation, damping, permitted machine movement, levelling and much more on the machine installation were drawn up with the aid of specific questions. According to the customer requirements, a small selection of different installation versions were developed and made available to the customer together with all important technical information for test runs.



When assessing the test runs, it could be established that the Wedgmount® 4-VRC/NA has all properties to meet the high dynamic requirements of this installation continuously. Using the 4-VRC/NA, the fine cutting press can be levelled with a high degree of precision and thus ensure a uniform load distribution on the 4 feet. The chosen insulation plate does not require the machine to be bolted to the floor due to the high coefficient of friction. The insulation plate also absorbs heavy impact and therefore protects buildings and neighbouring machines from disturbing vibrations.

The benefits at a glance:

- ✓ Outstanding insulation and damping properties
- ✓ Reduction of the emission of structure-borne noise from the machine
- ✓ Parasitic vibrations are reduced
- ✓ High level of anti-slide protection
- ✓ Tailor-made solution mached to the requirements

The product – 4-VRC/NA

Max. Load [daN]: 8000

Leveling range [mm]: +/- 6

Leveling distance per turn [mm]: 0.2

The application

For tool, plastic, graphic and general production machines.

AirLoc Schrepfer AG

Industriestrasse 2, CH-8618 Oetwil am See
Telephone +41 44 929 77 00, Fax +41 44 929 77 10
www.airloc-schrepfer.com, info@airloc-schrepfer.com

Worldwide Distributors

Please visit us in the website www.airloc-schrepfer.com for more details about our worldwide distributors.