

Technical datasheet

Wedgmounts 2160-KSC

Art. no.
1.42216

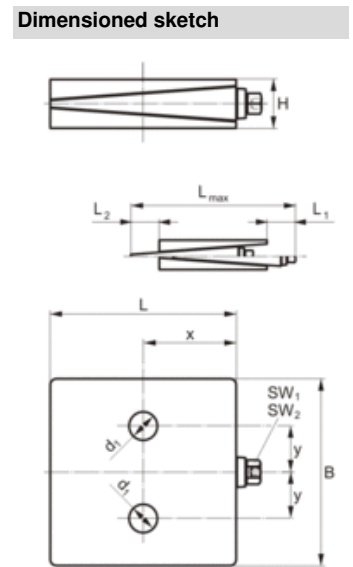
For bore, milling, long-bed machines and for machines that have to be aligned extremely precisely in all spatial axes.

Max. load
45000 lbs

Article information	
Type	2160-KSC
Name	Wedgmounts
Art. no.	1.42216
Color	RAL 7016 anthracite grey
Other colors upon request.	
Surface treatment	painting



Technical Data		Dimensions	
Max. load [lbs]	45000	Height H [mm]	62
Max. load + preload [lbs]	90000	Length L [mm]	205
Leveling range [mm]	9	Length L ₁ [mm]	87
Leveling range [mm]	-9	Length L ₂ [mm]	46
Leveling distance per turn [mm]	0.3	Length L _{max} [mm]	338
Temperature range from [°C]	-20	x [mm]	90
Temperature range to [°C]	100	y [mm]	27
Weight [kg]	12.562	Width B [mm]	230
Pad equipment		Inner diameter d ₁ [mm]	26
Bottom pad area A ₁ [cm ²]	402	Width across flats SW ₁ [mm]	30
		Width across flats SW ₂ [mm]	17



Suitable studs

	Studs RGM	M20	more
	Studs S	M20	more

Remark extent of supply
Studs need to be ordered separately.

