

Technical datasheet

Wedgmounds 2006.1-VRC /902

Art. no.
1.31106.59

For lathes, grinding machines, boring machines, transport lines and special machines. Ideal stability and non-skid properties. Without vibration isolation.

Max. load
6000 daN

Article information

For lathes, grinding machines, boring machines, transport lines and special machines. Ideal stability and non-skid properties. Without vibration isolation.

Type	2006.1-VRC /902
Name	Wedgmounds
Art. no.	1.31106.59
Color	RAL 7016 anthracite grey
Other colors upon request.	
Surface treatment	painted

Technical Data

Max. load [lbs]	13000
Leveling range [mm]	6
Leveling range [mm]	-6
Leveling distance per turn [mm]	0.15
Temperature range from [°C]	-20
Temperature range to [°C]	80
Weight [kg]	6.352

Dimensions

Height H [mm]	62
Height H_{OB} in neutral position, without pads [mm]	60
Length L [mm]	160
Length L_1 [mm]	75
Length L_2 [mm]	49
Length L_{max} [mm]	285
x [mm]	80
y [mm]	58
Width B [mm]	115
inner thread d_1	M12 / M16
Width across flats SW_1 [mm]	19




Pad equipment

Bottom pad type	902
Pad thickness unloaded [mm]	2
Coefficient of friction on concrete with fine mortar	0.8
Hardness [° Shore A]	90 - 95
Bottom pad area A_1 [cm ²]	184

Suitable studs

	Studs P	more
---	---------	----------------------

Product contents

Name	Type	Art. no.	Variante	Quantity
 Wedgmounds	2006.1-VRC /902	1.31106.59		1
 Threaded inserts (mounted)	M 12 / M22x1.5 li	9.93012	Variante: A	1
 Threaded inserts (mounted)	M 16 / M22x1.5 li	9.93016	Variante: B	1

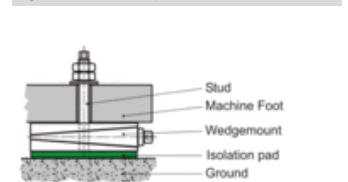
Remark extent of supply

Studs need to be ordered separately.

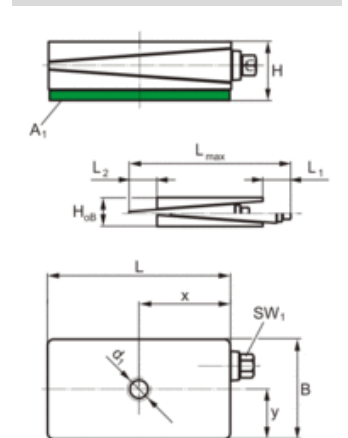
Type illustration



System description



Dimensioned sketch



Mounting sketch

